

ELSA
BRÄNDSTRÖM
HAUS



INSPIRING

ELSA BRÄNDSTRÖM HAUS

INTERNATIONAL SEMINAR AND CONFERENCE VENUE

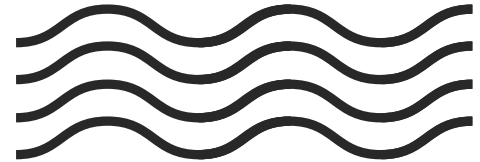
INSPIRING

OUR CONFERENCE ROOMS

Our conference rooms are flooded with light and offer a spectacular view of the Elbe River. Enjoy your breaks outside—every room is connected to either a balcony or a patio. In addition, our open grounds provide opportunities for outdoor sessions or a walk to the river's nearby shore.

Clear your mind in order to successfully conduct your work! All of our rooms have their own individual charm and are furnished with state-of-the-art technology. This naturally includes free access to the Internet via wireless network. Our media equipment will help articulate your unique visions and ideas.

Personalized service for our guests is important to us. Our staff members are available to answer your questions at all times, whether they concern organizational details onsite, technical support or a culinary preference. We are happy to support you!





GREAT HALL

20 persons or more
100sqm, with a view of the Elbe and
access to our patio and garden area
Including an adjacent room for group
work (Hamburger Room)

SEATING ARRANGEMENTS

Parliamentary: up to 50 persons

Tables in U-shape: up to 30 persons

Stuhlkreis: up to 30 persons

Stuhlreihen: up to 80 persons



EQUIPMENT

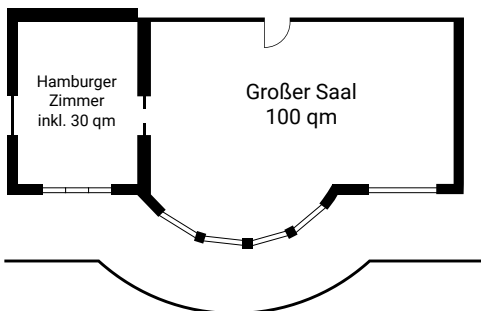
6 pin boards

2 flipcharts

Projector + screen

Small selection of presentation materials

Free access to wireless network



ADD-ON SERVICES:

- Additional room for group work from €150,00 per day/room
- Additional flipchart/pin board: €10,00 per day/item
- Presentation kit: €18,00 per day/item
- Meditation mat: €2,50 per day/item
- Meditation pillow: €2,50 per day/item
- Blanket: €1,00 per day/item



GREEN HALL

14 persons or more
60sqm, with a view of the Elbe and the nearby forest
Access to the patio, garden area, and adjacent rooftop terrace

SEATING ARRANGEMENTS

Parliamentary: up to 20 persons

Tables in U-shape: up to 20 persons

Chairs in a circle: up to 25 persons

Chairs in rows: up to 40 persons



EQUIPMENT

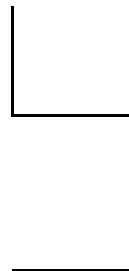
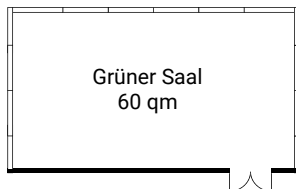
3 pin boards

1 flipchart

Projector + portable screen

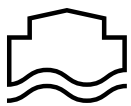
Small selection of presentation materials

Free access to wireless network



ADD-ON SERVICES:

- Additional room for group work from €150,00 per day/room
- Additional flipchart/pin board: €10,00 per day/item
- Presentation kit: €18,00 per day/item
- Meditation mat: €2,50 per day/item
- Meditation pillow: €2,50 per day/item
- Blanket: €1,00 per day/item



CLUB ROOM

8 persons or more
36sqm, with a view of the Elbe
and a balcony

SEATING ARRANGEMENTS

Parliamentary: up to 12 persons

Tables in U-shape: up to 12 persons

Chairs in a circle: up to 14 persons

Chairs in rows: up to 25 persons



EQUIPMENT

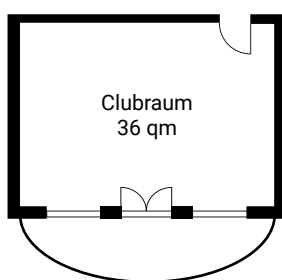
3 pin boards

1 flipchart

Projector + screen

Small selection of presentation materials

Free access to wireless network



ADD-ON SERVICES:

- Additional room for group work from €150,00 per day/room
- Additional flipchart/pin board: €10,00 per day/item
- Presentation kit: €18,00 per day/item
- Meditation mat: €2,50 per day/item
- Meditation pillow: €2,50 per day/item
- Blanket: €1,00 per day/item



RIVER VIEW

4 persons or more
26sqm, with a view of the Elbe
and a balcony

SEATING ARRANGEMENTS

Parliamentary: up to 8 persons

Tables in U-shape: up to 8 persons

Chairs in a circle: up to 10 persons

Chairs in rows: up to 15 persons



EQUIPMENT

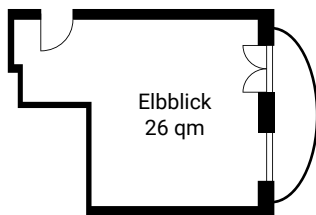
2 pin boards

1 flipchart

1 large-screen TV with laptop connection

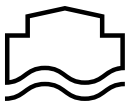
Small selection of presentation materials

Free access to wireless network



ADD-ON SERVICES:

- Additional room for group work from €150,00 per day/room
- Additional flipchart/pin board: €10,00 per day/item
- Presentation kit: €18,00 per day/item
- Meditation mat: €2,50 per day/item
- Meditation pillow: €2,50 per day/item
- Blanket: €1,00 per day/item



OPEN AIR

4 persons or more
26sqm, with a view of the Elbe*

SEATING ARRANGEMENTS

Parliamentary: up to 8 persons

Tables in U-shape: up to 8 persons

Chairs in a circle: up to 10 persons

Chairs in rows: up to 15 persons



EQUIPMENT

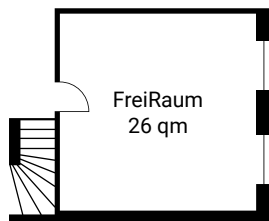
3 pin boards

1 flipchart

Projector (wall functions as screen)

Small selection of presentation materials

Free access to wireless network

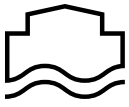


*only accessible via stairs/not accessible via wheelchair or other assistive devices, has direct access to the rooftop terrace



ADD-ON SERVICES

- Additional room for group work from €150,00 per day/room
- Additional flipchart/pin board: €10,00 per day/item
- Presentation kit: €18,00 per day/item
- Meditation mat: €2,50 per day/item
- Meditation pillow: €2,50 per day/item
- Blanket: €1,00 per day/item



LEASING THE CONFERENCE ROOMS

FLAT RATE "NORMAL"

Cost per person/day: €56,00



- 1 coffee break mid-morning, including coffee, tea, and an assortment of snacks
- Lunch (3-course menu, served buffet style), including water
- 1 coffee break in the afternoon, including coffee, tea, and an assortment of snacks
- 1 bottle of water (0,75l, still/medium) as a welcome gift in the conference room
- Space rental (for a group-size appropriate conference room) and standard technical equipment

Additional beverages for the initial welcome, for lunch, and inside the conference room will be billed separately. For example, a welcome coffee can be added for €3,50.

FLAT RATE "EIN BÜSCHN MEHR"

Cost per person/day: €65,00

- Welcome coffee at the beginning of the event
- 1 coffee break mid-morning, including coffee, tea, and an assortment of snacks
- Lunch (3-course menu, served buffet style), including water, Fritz Kola beverages and coffee specialties
- 1 coffee break in the afternoon, including coffee, tea, and an assortment of snacks
- Unlimited water and coffee/tea during the event
- Space rental (for a group-size appropriate conference room) and standard technical equipment



Additionally, unlimited Fritz Kola beverages can be added to both flat rates for €5,00 per person.



WE ARE HAPPY TO OPEN OUR SELF-SERVICE BAR AND OUR WINE LOUNGE TO YOU AT NIGHT!

In addition to individual arrangements
we offer the following standard package:

- Buffet "Warme Mahlzeit", can be added for 10 persons or more
€21,50 per person (appetizer + main course + cheese platter)
- Buffet "Brotzeit," can be added for 10 persons or more
€12,50 per person (cold platter, selection of bread, salad)
- Tajine dish served at the community table, can be added for 6 persons or more
€12,50 per person (North African vegetarian hot meal with couscous and salad)
(for 6 persons minimum, but **10 persons maximum**)



Beverages served at dinner will be billed separately. We have a large assortment of soft drinks, beer, and wine available. Rotating craft beer options and a small but excellent selection of gin, whiskey, and rum complete our menu.